

## **Autodownload Mini Reference for DEE Summer Evening Events or Local events with EOD**

This document sets out all the Autodownload menus, presented as an indented list. It is intended for use by new SI Coordinators, and those who are new to Autodownload, as a quick reference to those bits of Autodownload which they are likely to want to use for running a DEE Summer Evening Event (SEE) or a Local event with EOD. The author hopes this document will help you find your way around Autodownload. If you find errors, please communicate them to the author so that the document can be corrected for the benefit of other users.

### **June 2009 - updated for Autodownload Version 2.190**

Menu items in **bold** are those which we have found to be most useful for DEE Summer Evening Events (SEEs). Note that there have been numerous changes and additions to the menu structure in version 2.190.

The two main screens which you will want your data entry team to use are:

- |           |  |
|-----------|--|
| Add Entry | for entering runners who do not have their own SI card |
| Download  | for download   |

The rest of the screens are for the use of the SI coordinator, either in setting up the event or dealing with problems on the night. Most of the explanations relate to activities during the event; activities relating to event setup are noted as such.

### **AUTODOWNLOAD version**

This mini reference uses the Autodownload v2.190.203.403 menus, as currently installed on the DEE laptops.

### **Previous OE2003 users**

You should find Autodownload much easier to use, both for setting up the event and for running it on the day. Help text is automatically displayed at the bottom of each screen: press the Help button to toggle this display on and off.

Navigation within the application is similar to that within a web browser.

After completing most screens, you must click <SAVE> to save your work. If you just click the <BACK> button, you will lose the changes you have made on this screen.

### **The Autodownload Feature – Owned Cards and Hire Cards**

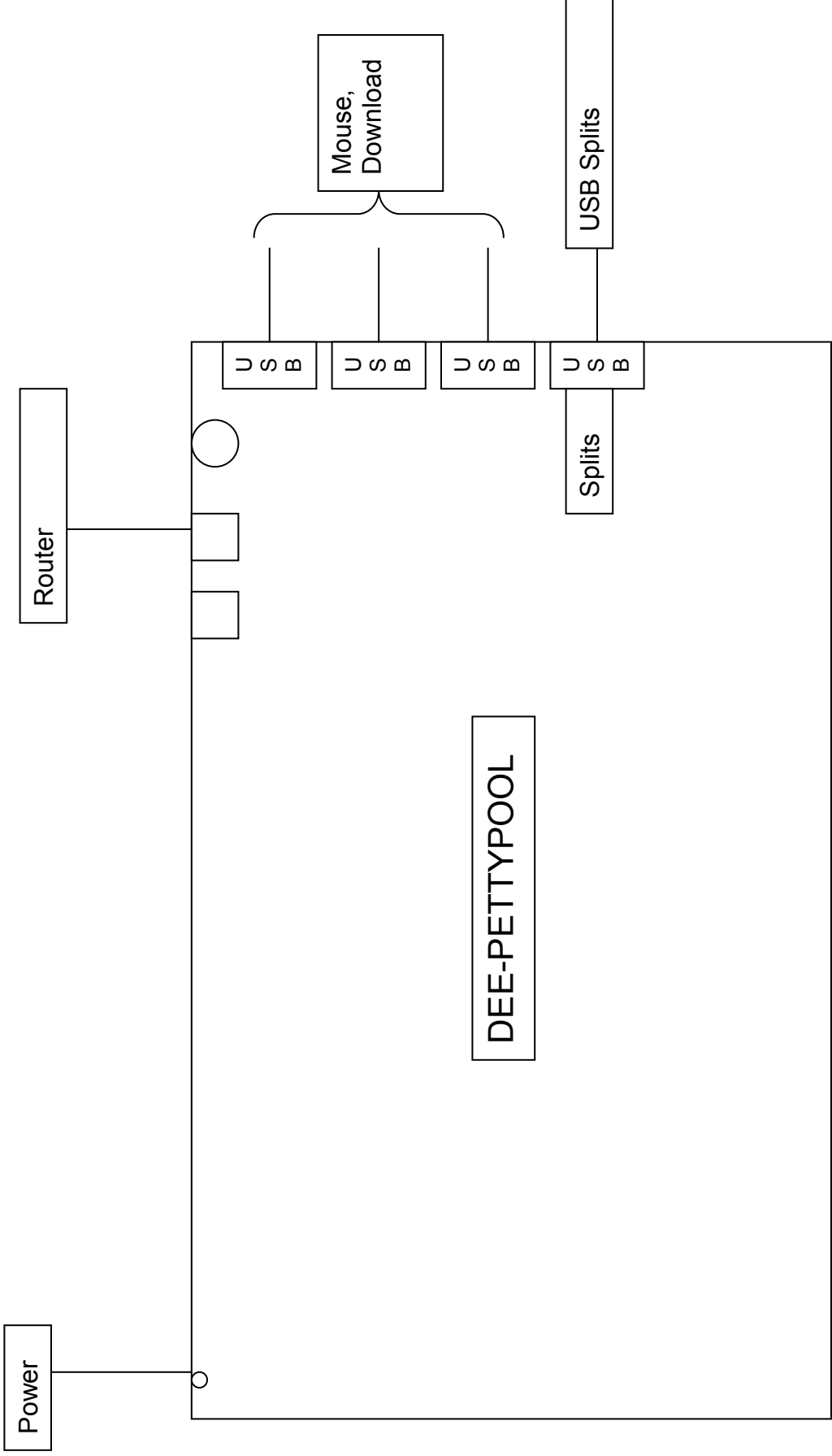
For EOD events, we do not process entries for people who own their SI card until they arrive at download – the program then looks them up in the database, recognises who they are, recognises what course they have run, and processes them.

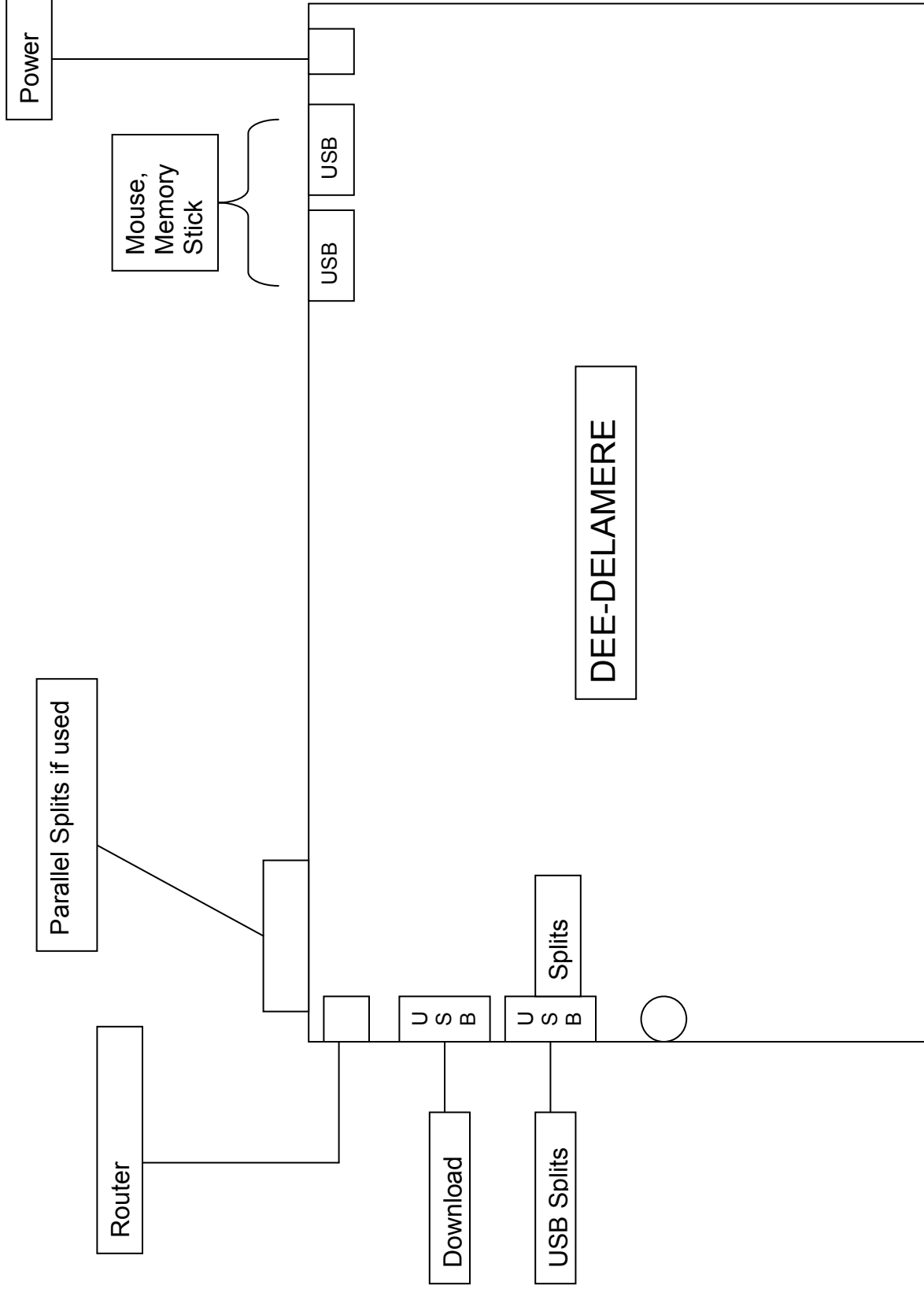
For people with hired SI cards (including school pools of cards, e.g. Sandbach), we do process their entry at the start of the event (though we don't have to), so that they don't

have to wait to be entered when they arrive at download.

It is important that we don't try to process entries for people with their own cards, so that the data entry team can concentrate on getting all the hire-card entries processed before runners start to arrive at download. If we don't get hire card entries processed before they arrive at download, then download will start processing them, we may finish up with 2 entries for 1 runner, and this can lead to unnecessary confusion.

Bob Elmes





## The Autodownload Menu Items explained

### *Main screen options.*

#### Select Event

*Select the existing event you want to work on – see further options below.*

#### Enter Licence Key

*Licence Key: t3zr-JsrJ-rrMl-2Grt-eJuA-rvrq-eqjv-tc36 (valid until 31/07/2009)*

*Licensed Club Name: DEE*

#### Database Settings

*Main screen on the server (DEE-DELAMERE):*

*Server: localhost*

*Port: 1433*

*Database: events*

*Username: sa*

*Password: deedata*

*Main screen on clients (DEE-PETTYPOOL, DEE-PRIMROSE):*

*Server: DEE-DELAMERE*

*Port: 1433*

*Database: events*

*Username: sa*

*Password: deedata*

#### Install Database Software

*Only for use when first installing the server*

#### SiCard Archive

##### Main screen

*Allows you to maintain the (local) archive of e-cards. Not much used.*

*Useful for viewing who owns an e-card. Note that all Dates of Birth are taken from SPORTident database are shown as 01/07/yyyy.*

##### Import SPORTident File

*Imports the SPORTident master archive. Do this to refresh the archive with new cards – say every couple of months?*

##### Import TCA File

*Not used*

##### Add SiCard to Archive

*Use to add a newly owned card to the Archive without needing to download a whole new Archive from SPORTident UK. It will then stay there for future events unless/until you do a delete/rebuild of the Archive.*

##### Delete All

*Use this if you want to rebuild the Archive from scratch. Import will run much faster after you do this; but you will lose any cards that you have added manually at previous events.*

## Add Event

**Name:** *name of event, e.g. Delamere North*

*Autodownload will automatically insert the DEE club name on splits and reports.*

**Date:** *date of event*

**Event Type:** *BOF Local (or BOF Regional or BOF National or BOF Schools)*

**Epoch (hh:mm:ss):** *set to a time outside the range of this event (9:00:00 should cover everything except a night event).*

**Print splits automatically on download:** *tick.*

**Splits Advertising:** *put the extra text that you want on the splits printouts*

The screenshot shows a web browser window titled "AutoDownload from SPORTident - DEE". The page has a blue header with the title. Below the header, there is a navigation menu on the left with "Back" and "Exit" options. The main content area is titled "Add Event" and contains a form with the following fields:

Name:	Delamere North
Date: (dd/mm/yyyy)	12/05/2009
Event Type:	BOF Local
Start Time Precedence:	Punching Start
Epoch: (hh:mm:ss)	02:00:00
<input checked="" type="checkbox"/> Print splits automatically on download?	
Splits Advertising:	www.deeside-orienteeing-club.org.uk

## Import Event Backup

*Restores an entire event from a previous backup.*

*Use this to transfer an event between home machine and club laptop, or to restore a previous backup onto a new server (e.g. DEE-PETTYPOOL) if the main server (DEE-DELAMERE) fails during an event.*

***Options once the event has been selected.***

Modify Event

*Change the basic event details*

**Courses**

Courses – *select one course to work on*

Course details – *select a control in order to modify its data, e.g. add an alternative control code, make the control optional, or exclude its split from the total time. **Decisions on what to do during the event are the Controller's responsibility, so ask him/her first!***

Modify Course

*Modify data for a course*

Add/Insert Control

*Add controls to a course*

Delete

*Delete the course*

Add/Insert Course – *add another course*

*Use when Planner has not used OCAD course setting*

**Import/Export Courses from IOF XML**

*Use when Planner has used OCAD 9 - recommended*

Import Courses from OCAD 8

*Use when Planner has used OCAD 8 – not recommended*

**Control Replacement**

*Replace a control across all courses*

## Entries

### Add Entry

**Add Entry.**

*Enter the fields:*

*SiCard Number*

*BOF Number (don't bother for SEEs)*

*Name (Forename then Surname, e.g. John Smith)*

*Age Class*

*Club*

*<SAVE>*

*No need to enter Course (because using the Autodownload feature), but it won't do any harm if you do enter it.*

**Sex/Date of Birth to calculate Age Class for hired card users**

**Find SiCard Number to look up details from E-Card Number**

**Find BOF Number to look up details from BOF Number**

**Delete to delete this entry**

Add Entry by Punch *not used*

Import/Export Entries

For pre-entry events, use with Fabian4.

Print Entries

SiCard Breakdown

Unclassified report

*Mispunches etc.*

Punch Entry Check

Print Hire Cards List

Delete All

### Search

*This is how you get to look at runners who have already downloaded, as well as those (with hire cards) who have been entered but not downloaded.*

**Search**

*Search entries by any combination of E-Card Number, Name, Club, Course. Leave search terms blank to see all entries.*

*Screen then shows the selected entries.*

**Card Number**

*Click on Card Number to view individual entry*

**Modify Entry**

*To change entry details*

**Read Card Number**

**Sex/Date of Birth**

*To recalculate Age Class*

**View/Edit Splits**

*See splits for this competitor*

*Then you can Remove Download if you want to get rid of the previous splits and then do a new download.*

**Print Splits**

*This is how you get a second splits printout.*

## Download

### SiCard Downloads

#### Manual

Com Port , Baud Rate, Splits Printer

*Getting these right can sometimes be tricky: see Appendix 2 at end of this document.*

Fast Splits

*Tick this option.*

Semi-Automatic, stop on mis-punch

Semi-Automatic

Automatic

#### Print/Master Station Downloads

Manual (used to reconstruct event from Schools Kit download)

Semi-Automatic

#### SiConfig Downloads

Manual

Semi-Automatic

## Results

*Select course and show results on screen*

*Use mouse wheel to scroll between courses*

### HTML Results

*Prepares results as a cluster of files, with index, ready for uploading to the web.*

Print Results

*Prints the results for use at the event.*

### Live Results

*Displays the results for use at the event. Use on DEE-PRIMROSE, at the side of the tunnel tent, facing out of the tent. Then you won't need to print any results.*

### Import/Export XML Results

*To get xml results file for RouteGadget:*

*Import/Export: Export*

*File Type: Result List with Split Times*

*Filename: you choose*

*Strict IOF Format? tick this option!*

*Export by Course rather than Class? do not tick.*

Export CSV Results

Export OE Splits

### Colour Standards Export

*Calculates Colour Standards and puts them in an html file for uploading to the web. Please call it colourstandards.html*

## **Safety Check**

*Shows number of missing runners*

### **Outstanding Competitors**

*Shows who the missing runners are (owned cards), or just the hire card numbers (so look through the Entry Forms to find out who they are).*

### **Read Hardware**

*As soon as the Start has closed, read all the Clear, Check and Start boxes to get a list of the runners we are expecting to download.*

### **Read SiConfig/SiManager**

*If unable to read the Start box in Autodownload directly, you can read it into SICONFIG, then copy the data from SICONFIG's file using this menu. Should not normally be necessary.*

### **Remove Safety Data**

## **Export XML Event Backup**

*To Export (Backup) the whole event -*

*Take a backup to file or to memory stick. Every 15 minutes during the event, take a backup using any PC on the network. Set a watch alarm to remind you.*

*Note that you can continue with activity on other PCs whilst taking a backup.*

*Name every backup sequentially, so that you can go back next day and work out how things went wrong.*

*To Import (Restore) the whole event -*

*See the Main Menu.*

## **Appendix 1 - The Autodownload Menu Structure**

### ***Main screen***

- Select Event
  - List of existing events
- Enter Licence Key
- Database Settings
  - Install Database Software
- SiCard Archive
  - SiCard Archive
  - Import BOF File
  - Import TCA File
  - Add SiCard to Archive
  - Delete All
- Add Event
  - Add Event
- Import XML Event Backup

### ***For a selected event:***

- Modify Event
- Courses
  - Courses
  - Add Course
  - Import/Export XML Courses
  - Import Courses from OCAD 8
  - Control Replacement
- Entries
  - Search screen with search results
  - Add Entry
    - Entry details
    - Sex/Date of Birth
    - Find Si-Card Number
    - Find BOF Number
    - Delete
  - Add Entry by Punch
  - Import/Export XML Entries
  - Import/Export CSV Entries
  - Import OE Entries
  - Print Entries
  - SiCard Breakdown
  - Unclassified Report
  - Punch Entry Check
  - Print Hire Cards List
  - Delete All

## Download

### SiCard Downloads

Manual

Semi-Automatic, stop on mispunch

Semi-Automatic

Automatic

### Print/Master Station Downloads

Manual

Semi-Automatic

### SiConfig Downloads

Manual

Semi-Automatic

## Results

Results display with selection by course

HTML Results

Print Results

Live Results

Import/Export XML Results

Export CSV Results

Export OE Splits

Colour Standards Export

## Safety Check

Outstanding Competitors

Read Hardware

Read SiConfig/SiManager

Remove Safety Data

Export XML Event Backup

Copy Event

## Appendix 2 – Com port and printer port settings for download

### Com port settings (for USB download station)

This can be tricky!

Normally, and irrespective of which physical USB port you use, the USB Master Stations will show as:

	DEE-DELAMERE	DEE-PETTYPOOL
USB Master with BLACK cable	COM7	COM5
USB Master with GREY cable	COM5	COM6

However, this can sometimes change.

The best way to manage this is to plug in the USB Master Stations, then to see what ports the PCs allocate to them. There are two ways to see what ports are allocated:

Method 1 (the easiest, provided it works)

Autodownload | Download | Manual

Click dropdown for COM Port

It should show two ports: COM3 (I don't know what this is used for) and the port which is allocated to the USB Master Station.

Choose the port allocated to the USB Master Station (i.e. NOT COM3).

For example, on DEE-DELAMERE with the black cabled USB Master, the dropdown should show

COM3

COM7 SPORTident USB to UART Bridge

So select COM7 (and remember to Save).

Method 2 (more useful if you have problems)

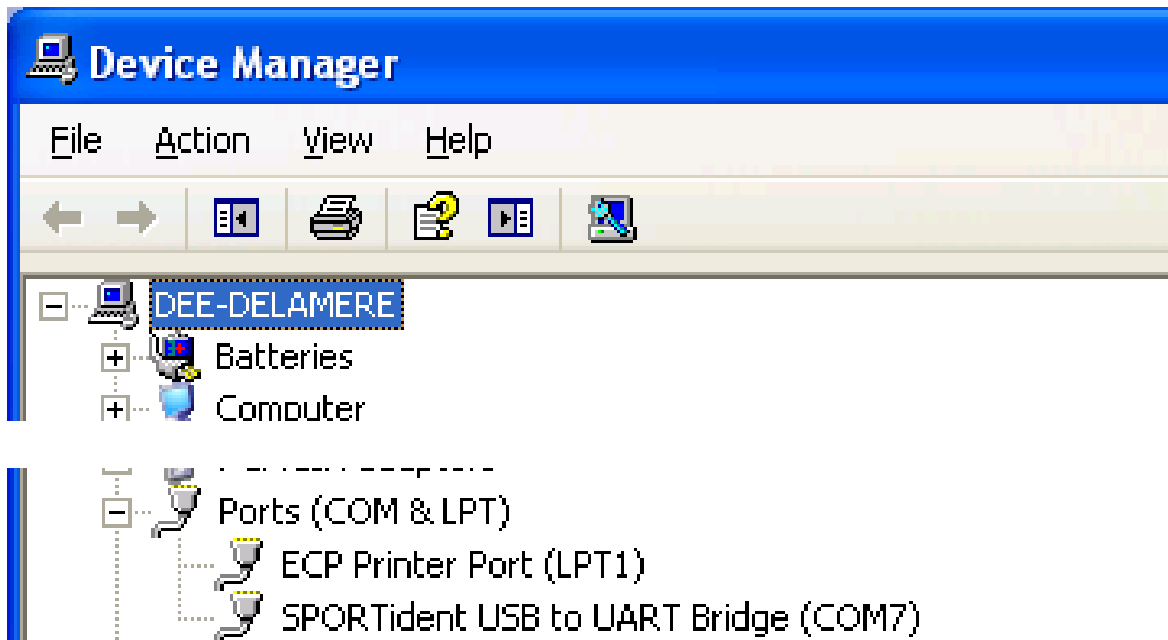
Go into Device Manager.

You can access this from Control Panel | System | Hardware | Device Manager, but also directly from the Device Manager icon on the desktop on DEE-DELAMERE and DEE-PETTYPOOL.

Expand Ports (COM & LPT)

If Device Manager has detected a USB Master Station, it will show as  
SPORTident USB to UART Bridge (COMn)

For example:



So again, in Autodownload, select COM7 (and remember to Save).

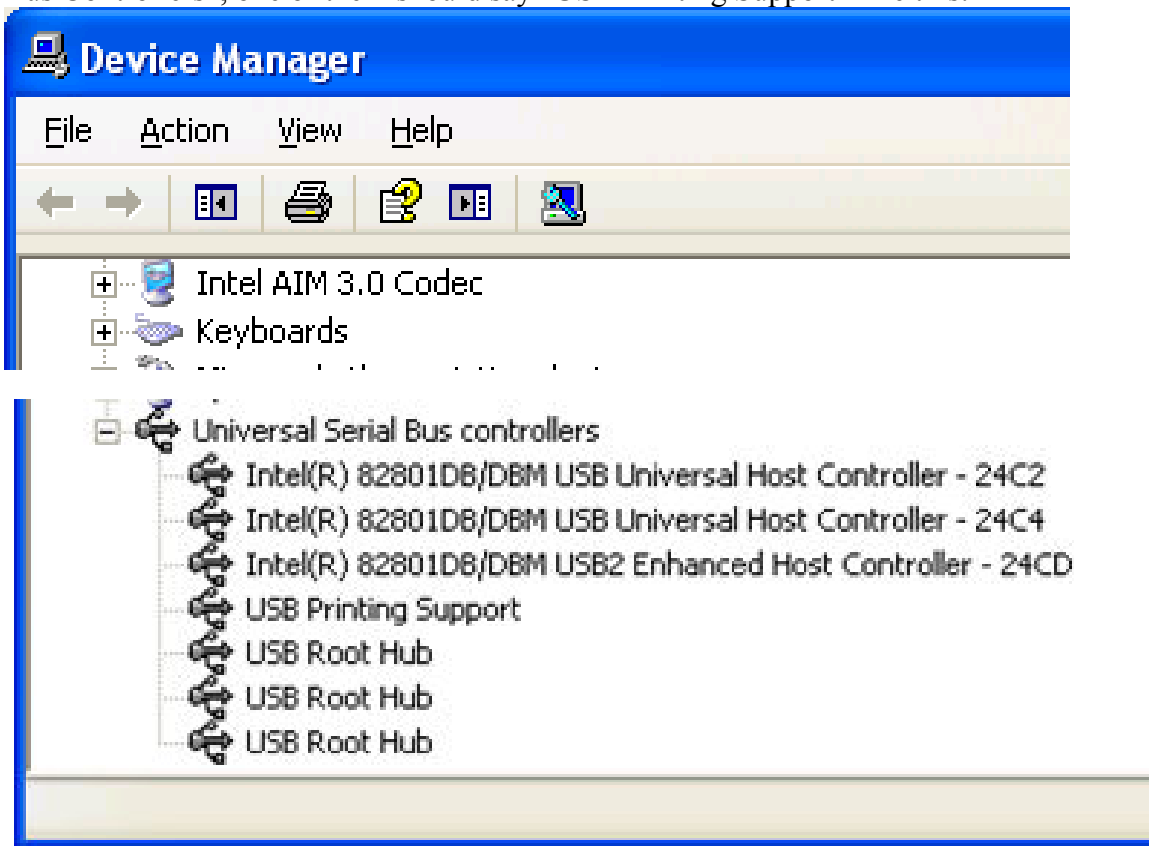
If you have problems getting either machine to recognise a USB Master Station, just unplug it and replug it. The usual indication that you have a problem is that you go into Download, select which type of download you want (eg "Automatic"), and Autodownload then says "The port 'COMn' does not exist". It is at this stage that you go into diagnostics with Device Manager.

## USB Splits Printer Attachment

This should work to either PC. You choose the splits printer when you go into Download. If you cannot see the USB splits printer in the Splits Printer dropdown, follow the instructions below. Sometimes you can see the printer, and send printout to it, but it doesn't print: in this case, the printer output will be spooled (and will all print out later when you successfully connect the designated printer).

It seems to be best to connect the USB splits printer to the same physical USB port every time – to this end, one port on each PC has “Splits” written against it.

If the splits printer doesn't work, try Device Manager. If you expand “Universal Serial Bus Controllers”, one of them should say “USB Printing Support” like this:



If “USB Printing Support” doesn't appear in the list, it means that the PC has not detected the printer. Try unplugging and replugging.

Sometimes, for reasons that are not understood, the USB printer drivers disappear and have to be reinstalled. If this happens, you will get the message “New Hardware Detected”. Follow the New Hardware wizard. When it asks you for the location of the drivers, you will find them (on both DEE-DELAMERE and DEE-PETTYPOOL) in `c:\cbm1000driver\USB\Printer Driver\2000XP\CBM1000.DLL`.